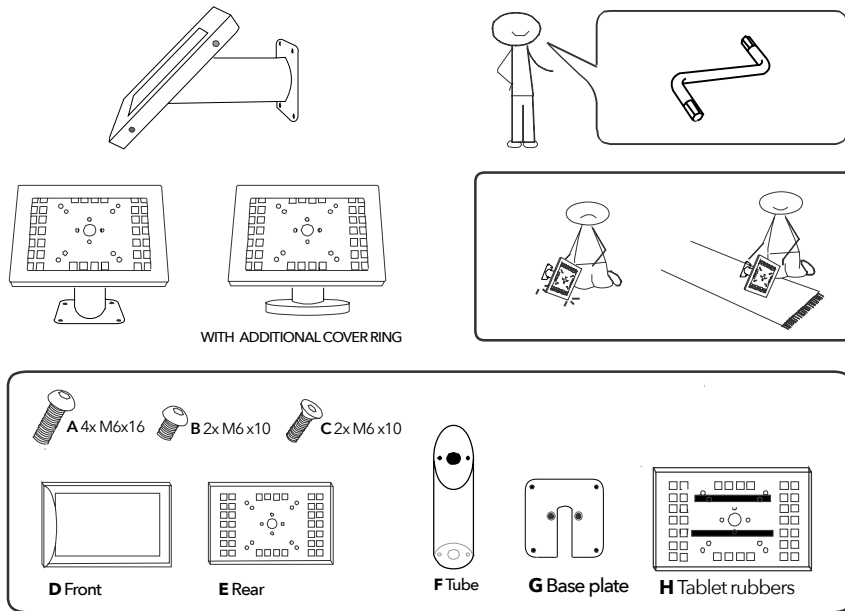


SECURO 12"-13" WALL & DESK MOUNT



Before you start: Determine the position of the screen; Portrait or landscape and fix cell rubbers [H] position with tablet in the exact middle of the casing. (See manual - *Fixing the rubbers*)

Note: Fitting the flat side of the tube [C] to the base plate [D] results in a straight tube (regular), mounting the diagonal side to the base plate results in an upward tube (variation).

1 Fit plate [G] on flat side tube [F]; Mount [C] M6 x 16 on the countersunk side.

Optional: Guide power cable through hole in tube to bottom.

2 Mount the base to wall or desk. (Plugs and screws **not** included)

Optional: Place additional cover over the tube to cover base plate.

3 Fit rear of casing [E] on the diagonal side tube [F]; Use [A] M6 x 16

Optional: Guide power cable through hole in casing.

Optional: Install additional key lock (see manual - Key lock)

4 Place tablet and fit front part [D] of the casing over the rear part [E], while pressing tablet onto cell rubbers [D].

5 Position tablet into casing without reducing the pressure on the tablet.

6 Fasten both parts of the casing with screws; Use [B] M6 x 10, and/or close the additional key lock

