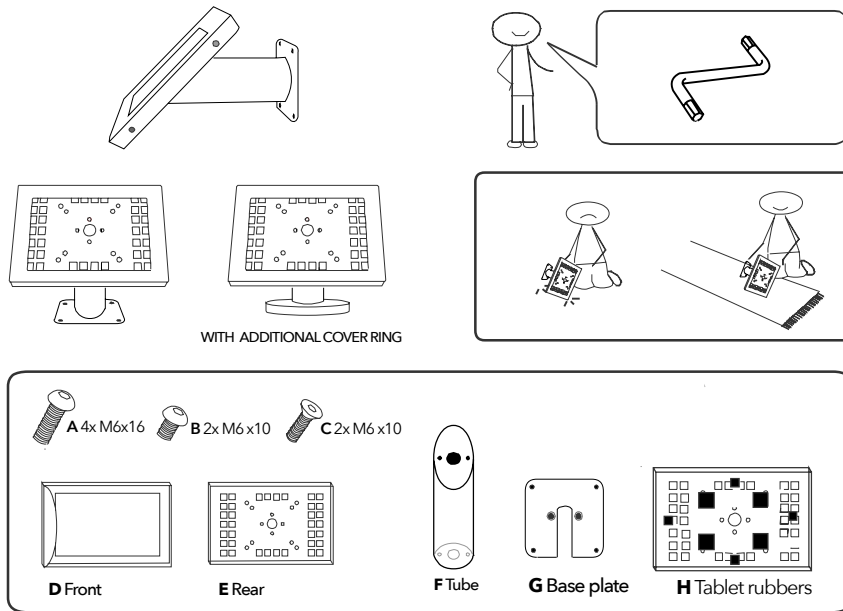


SECURO 7"-8" WALL & DESK MOUNT



Before you start: Determine the position of the screen; Portrait or landscape and fix cell rubbers [H] position with tablet in the exact middle of the casing. (See manual - *Fixing the rubbers*)

Note: Fitting the flat side of the tube [C] to the base plate [D] results in a straight tube (regular), mounting the diagonal side to the base plate results in an upward tube (variation).

- 1 Fit plate [G] on flat side tube [F]; Mount [C] M6 x 16 on the countersunk side.
Optional : Guide power cable through hole in tube to bottom.
- 2 Mount the base to wall or desk. (Plugs and screws **not** included)
Optional: Place additional cover over the tube to cover base plate.
- 3 Fit rear of casing [E] on the diagonal side tube [F]; Use [A] M6 x 16
Optional: Guide power cable through hole in casing.
Optional: Install additional key lock (see manual - Key lock)
- 4 Place tablet and fit front part [D] of the casing over the rear part [E], while pressing tablet onto cell rubbers [D].
- 5 Position tablet into casing without reducing the pressure on the tablet.
- 6 Fasten both parts of the casing with screws; Use [B] M6 x 10, and/or close the additional key lock

